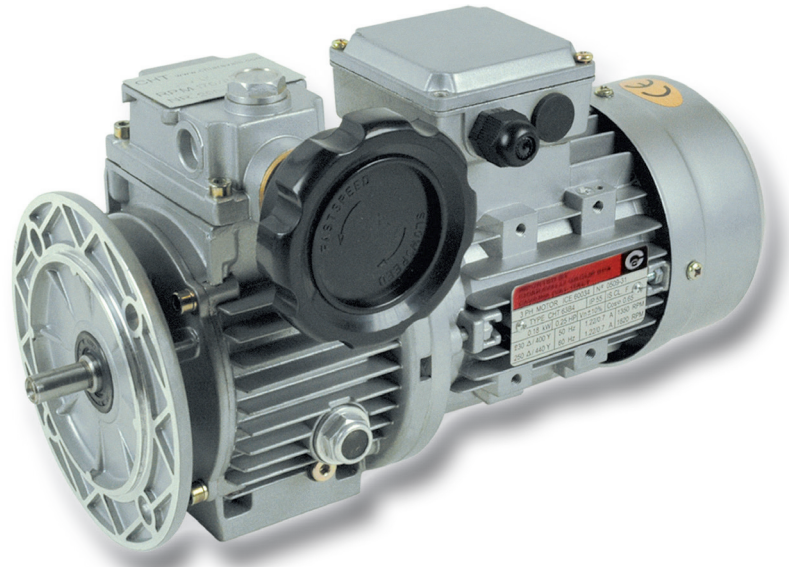
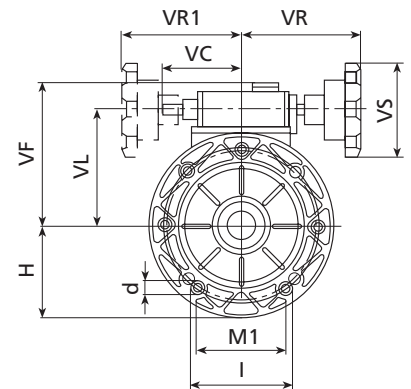
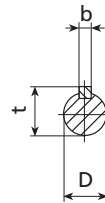
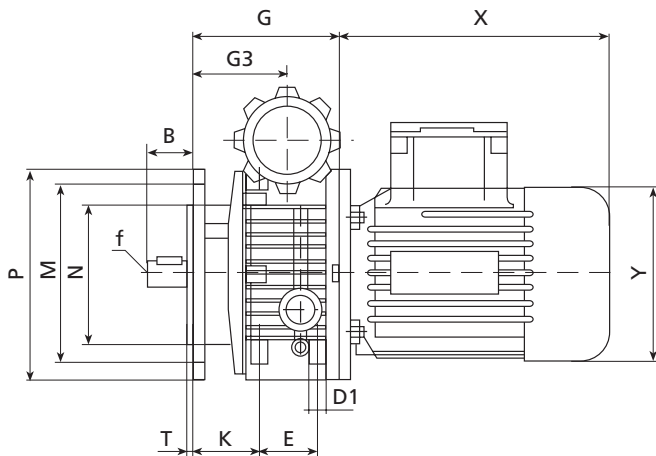


Motovariatori - serie CHV



Prestazioni con motori 4 poli

Tipo	potenza	velocità uscita	coppia uscita
	Kw		
CHV 02	0,18	170 - 880	3,0 - 1,5
CHV 02	0,22	170 - 880	3,8 - 1,9
CHV 05	0,37	200 - 1000	6,0 - 3,0
CHV 10	0,75	200 - 1000	12 - 6,0
CHV 20	1,10	200 - 1000	18 - 9,0
CHV 20	1,50	200 - 1000	24 - 12
CHV 30	2,20	200 - 1000	36 - 18
CHV 50	3,00	200 - 1000	48 - 24
CHV 50	4,00	200 - 1000	64 - 32



	B	D(j6)	E	G	G3	H	I	M	M1	N	d	D1	P	T	K	VC	VF	VL	VR	VR1	VS	b	f	t	kg
CHV 02	23	11	50	112,5	64,5	70	72	115	60	95	9	M6	140	3,5	46,0	71	111	78	110	110	85	4	M5	12,5	3,4
CHV 05	30	14	40	110,0	74,0	80	90	130	76	110	9	M8	160	3,5	52,5	71	123	90	110	110	85	5	M6	16,0	4,7
CHV 10	40	19	58	139,0	85,5	100	98	165	84	130	11	M8	200	3,5	60,0	79	140	107	120	120	110	6	M6	21,5	7,8
CHV 20	50	24	-	188,0	115,0	126	241	165	-	130	11	-	200	3,5	-	-	144	122	150	-	110	8	M8	27,0	31,0
CHV 30	60	28	-	222,0	131,0	150	270	215	-	180	15	-	250	4,0	-	-	188	150	160	-	110	8	M10	33,0	55,0
CHV 50	60	28	-	222,0	131,0	150	270	215	-	180	15	-	250	4,0	-	-	188	150	160	-	110	8	M10	33,0	57,0