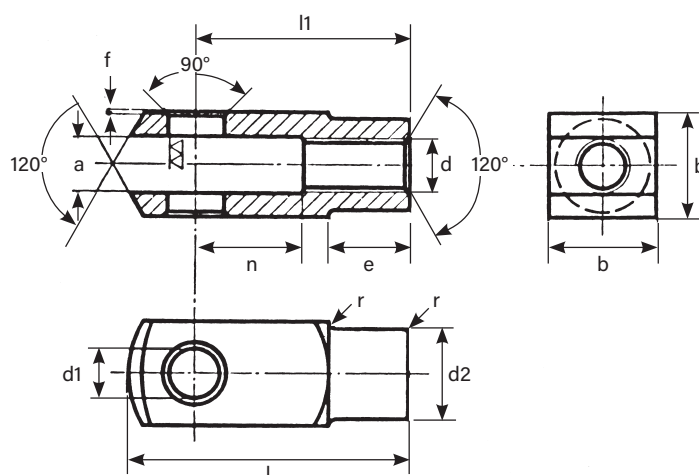
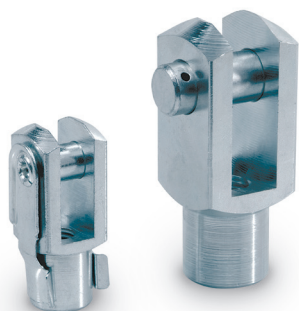


## Forcelle filettate femmina UNI 1676

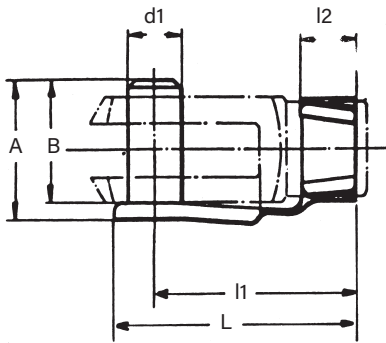


### Materiale:

95 - Mn Pb 23 R 50 kg/mm<sup>2</sup> - filettatura destra. Filettatura sinistra a richiesta

Tipo	a	valori della toller. su a (B 12)	b	d1	valori della toller. su d1 (H8)	d2	e	f	l	l1	n	r
d	mm	mm	mm	mm	mm	mm	mm	mm	mm	mm	mm	mm
<b>4 MA</b>	4	+ 0,14	8	4	+ 0,030	8	6,0	0,5	21	16	8	0,5
<b>4 MA x 16</b>		+ 0,26			0				29	24	16	
<b>5 MA</b>	5	+ 0,14	10	5	+ 0,030	9	7,5	0,5	26	20	10	0,5
<b>5 MA x 20</b>		+ 0,26			0				36	30	20	0,5
<b>6 MA</b>	6	+ 0,14	12	6	+ 0,030	10	9,0	0,5	31	24	12	0,5
<b>6 MA x 24</b>		+ 0,26			0				43	36	24	0,5
<b>8 MA</b>	8	+ 0,15	16	8	+ 0,036	14	12,0	0,5	42	32	16	0,5
<b>8 MA x 32</b>		+ 0,30			0				58	48	32	0,5
<b>10 MA</b>	10	+ 0,15	20	10	+ 0,036	18	15,0	0,5	52	40	20	0,5
<b>10 MA x 40</b>		+ 0,30			0				72	60	40	0,5
<b>12 MA</b>	12	+ 0,15	24	12	+ 0,043	20	18,0	0,5	62	48	24	0,5
<b>12 MA x 48</b>		+ 0,33			0				86	72	48	0,5
<b>14 MA</b>	14	+ 0,15	27	14	+ 0,043	24	23,0	1,0	72	56	27	1,0
<b>14 MA x 56</b>		+ 0,33			0				101	85	56	1,0
<b>16 MA</b>	16	+ 0,15	32	16	+ 0,043	26	24,0	1,0	83	64	32	1,0
<b>16 MA x 64</b>		+ 0,33			0				115	96	64	1,0
<b>18 MA</b>	18	+ 0,16	36	18	+ 0,043	30	27,0	1,0	94	72	36	1,0
		+ 0,37			0							
<b>20 MA</b>	20	+ 0,16	40	20	+ 0,052	34	30,0	1,0	105	80	40	1,0
		+ 0,37			0							

## Clips per forcelle UNI 1676

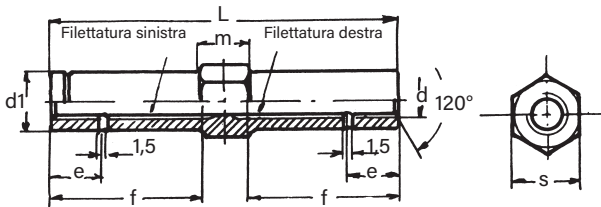


**Materiale:**

95 - Mn Pb 23 R 50 kg/mm<sup>2</sup>

Usato per forcella	d1 mm	A mm	B mm	L mm	L1 mm	L2 mm
4 MA	4	11,0	9	19	15	5
4 MA x 16	4	11,0	9	27	23	5
5	5	13,5	12	23	19	6
5 MA x 20	5	13,5	12	33	29	6
6 MA	6	16,0	14	28	23	6
6 MA x 24	6	16,0	14	40	35	6
8 MA	8	22,0	18	37	31	8
8 MA x 32	8	22,0	18	53	47	8
10 MA	10	26,0	23	46	39	10
10 MA x 40	10	26,0	23	66	59	10
12 MA	12	27,0	22	55	47	12
12 MA x 48	12	27,0	22	80	71	12
14 MA	14	32,0	30	63	53	14
14 MA x 56	14	32,0	30	90	80	14
16 MA	16	38,0	36	75	61	15
20 MA	20	47,0	44	95	77	16

## Manicotti di regolazione UNI 1677

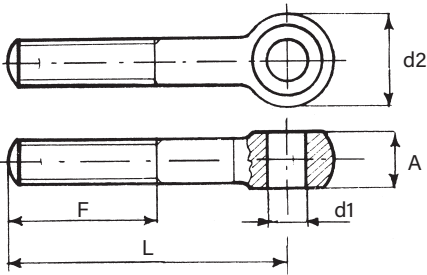


**Materiale:**

acciaio PR 80

Tipo	d1 mm	f mm	e mm	L mm	m mm	s mm
5 MA	7,6	29	7,5	65	10	8
6 MA	9,5	30	9,0	70	10	10
8 MA	13,5	35	12,0	80	12	14
10 MA	16,5	40	15,0	90	14	17
12 MA	18,5	45	18,0	100	14	19
14 MA	21,5	50	21,0	110	16	22
16 MA	23,5	55	24,0	120	16	24

## Tiranti ad occhio UNI 2408



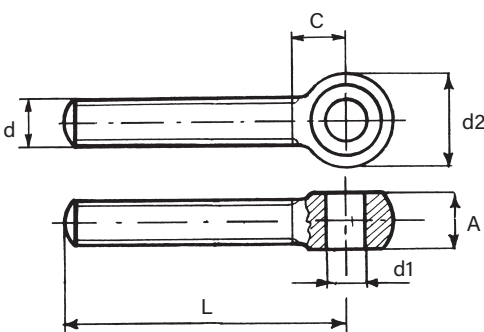
**Materiale:**

acciaio A 37.

Disponibili con filetto destro e sinistro e con filettatura tutto gambo.

Tipo	A mm	d1 <sub>HB</sub> mm	d2 mm	F mm	L mm
6 MA	6	6	16,5	50	100
8 MA	8	8	18,0	50	100
10 MA	10	10	24,0	50	100
12 MA	12	12	27,0	50	100
14 MA	14	14	30,0	50	100
16 MA	16	16	36,0	50	100

## Tiranti ad occhio UNI 6058



**Materiale:**

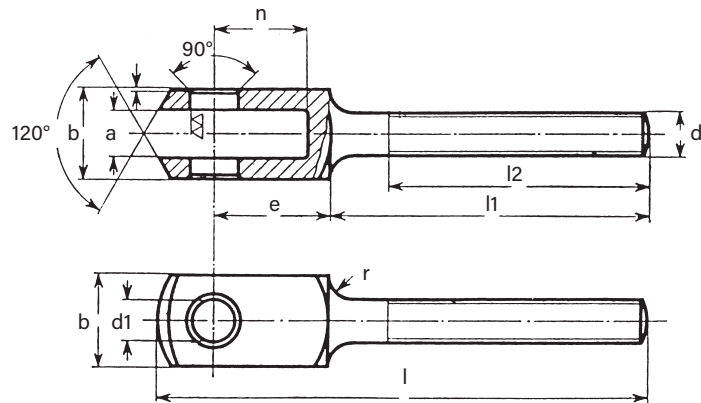
acciaio CL 4.6.

Tipo	A mm	d1 <sub>HB</sub> mm	d2 mm	C mm	L mm
6 MA	7	5	12	8,5	30 - 40 - 50
8 MA	9	6	16	11,1	40 - 50 - 60
10 MA	12	8	20	13,8	40 - 50 - 60 - 70 - 80
12 MA	14	10	24	16,4	50 - 60 - 70 - 80 - 90
14 MA	16	12	28	19,0	60 - 70 - 80 - 90 - 100 - 120
16 MA	18	14	32	21,0	70 - 80 - 90 - 100 - 120 - 140
18 MA	20	16	36	24,2	150
20 MA	22	18	40	26,2	80 - 90 - 100 - 120 - 140 - 160
22 MA	24	18	44	28,2	180
24 MA	26	20	48	31,5	200
27 MA	30	22	54	34,5	220
30 MA	33	25	60	38,8	230

**N.B.:** Fornibili a richiesta solo con filetto destro e per adeguati quantitativi

## Forcelle filettate maschio UNI 1675

N.B.: A richiesta - interpellateci per la disponibilità

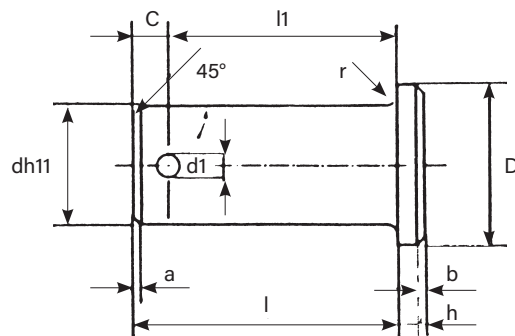


**Materiale:**  
95 Mn Pb R 50 kg/mm<sup>2</sup>.  
Disponibile con filetto destro o sinistro.

Tipo	valori della toller. su a (B 11)			valori della toller. su d1 (D 10)			e	f	l	l1	l2	n	r
	a	b	d1	a	b	d1							
<b>M 5</b>	5	10	5	+ 0.140 + 0.215		+ 0.030 + 0.078	12,5	0,5	63,5	45	35	10	2,5
<b>M 6</b>	6	12	6	+ 0.140 + 0.215		+ 0.030 + 0.078	15,0	0,5	72,0	50	40	12	3,0
<b>M 8</b>	8	16	8	+ 0.150 + 0.240		+ 0.040 + 0.098	20,0	0,5	85,0	55	45	16	4,0
<b>M 10</b>	10	20	10	+ 0.150 + 0.240		+ 0.040 + 0.098	25,0	0,5	97,0	60	50	20	5,0
<b>M 12</b>	12	24	12	+ 0.150 + 0.260		+ 0.050 + 0.120	30,0	0,5	109,0	65	55	24	6,0
<b>M 14</b>	14	27	14	+ 0.150 + 0.260		+ 0.050 + 0.120	33,5	1,0	119,5	70	60	27	6,0
<b>M 16</b>	16	32	16	+ 0.150 + 0.260		+ 0.050 + 0.120	40,0	1,0	134,0	75	65	32	8,0

## Perni con testa per forcelle UNI 1710

**Materiale:**  
95 - Mn Pb R 50 kg/mm<sup>2</sup>.



Tipo	l	h	a	b	D	r	d1	c	l1
<b>4</b>	12	1,5	1,0	0,5	7	0,5	1,5	3,0	9,0
<b>5</b>	14	1,5	1,0	0,5	8	0,5	1,5	3,0	11,0
<b>6</b>	16	1,5	1,0	0,5	9	0,5	2,0	3,0	13,0
<b>8</b>	20	2,0	1,0	0,5	12	0,5	2,0	3,0	17,0
<b>10</b>	25	2,0	1,5	0,5	14	0,5	3,0	3,5	21,5
<b>12</b>	30	3,0	1,5	1,0	16	0,5	3,0	3,5	26,5
<b>14</b>	35	3,0	1,5	1,0	19	1,0	4,0	4,0	31,0
<b>16</b>	40	3,0	1,5	1,0	20	1,0	4,0	4,0	36,0
<b>18</b>	45	4,0	1,5	1,0	22	1,0	4,0	5,0	40,0
<b>20</b>	49	4,0	1,5	1,0	24	1,0	4,0	5,5	43,5